

VA15, VA2X, VA3X

Vision Appliance



VA15, VA2X, VA3X

Key Features

- Compact DIN mountable device
- Single or dual camera inspections
- Suitable for tight-fit camera applications
- Pre-installed applications for all levels of expertise
- Image resolutions to 1600 x 1200
- Quick connect/disconnect wiring

Vision Capabilities

- Positioning
- Identification
- Verification
- Measurement
- Flaw Detection

Overview

Compact Vision Appliances for Dual Camera Applications

DALSA's VA15, VA2X and VA3X Vision Appliances provide automated optical inspection solutions for applications requiring one or two views of a part. Designed for easy setup and integration, DALSA Vision Appliances offer manufacturers a cost-effective and practical means of automating quality control on the factory floor.

The VA15, VA2X and VA3X products are fully equipped with directly accessible industrial grade inputs and outputs that are wired using removable screw terminal connectors. A visible LED light is coupled to each connection to reflect the active state of the signal. Flexible I/O, combined with choice of camera resolution and software user interface make these vision appliances well suited to tackle a wide range of inspection tasks.

| Specifications | VA15 | VA20 | VA21 | VA30 | VA31 |
|-----------------|----------------|------------|-------------------|-------------|-------------------|
| Program Memory | 128 MB | 256 MB | 256 MB | 512 MB | 512 MB |
| Storage Memory | 64 MB | 128 MB | 2 GB | 128 MB | 4 GB |
| Image Size min. | 640 x 480 | | | | |
| Image Size max. | 640 x 480 | 1024 x 768 | 1024 x 768 | 1600 x 1200 | 1600 x 1200 |
| # Cameras | 1 Area | 2 Area | 2 Area | 2 Area | 2 Area |
| Communication | | | | | |
| - Ethernet | 10/100/1000 | | | | |
| - USB | 2 x 1.1 | 2 x 1.1 | 2 x 1.1 | 2 x 2.0 | 2 x 2.0 |
| - Serial | RS-232 | | | | |
| - Visual | 26 LEDs | | | | |
| I/O | 24V 10in/8out | | | | |
| User Interface | iInspect Lite | iInspect | iInspect/Sherlock | iInspect | iInspect/Sherlock |
| Power | 24V @ 1A | | | | |
| Operating | 0-40°C ambient | | | | |
| | 5-90% humidity | | | | |
| Dimensions | 9.5 x 16 x 5 | | | | |
| Compliance | CE | | | | |

VA15, VA2X, VA3X

Vision Appliance

The VA15, VA2X and VA3X products are pre-loaded with two distinct application interfaces to cater to the differing needs and experiences of end users. Each offers a comprehensive suite of tools and capabilities to satisfy a variety of applications and industries.

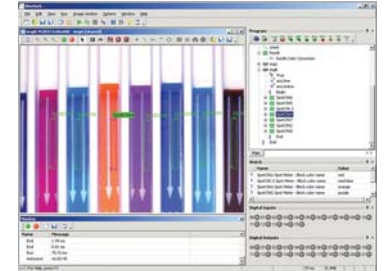
Both software interfaces support standard factory protocols, such as Modbus and Ethernet/IP, for connecting with complementary factory equipment.



Designed for All Users

iNspec software allows users to setup and deploy vision solutions with little or no prior experience.

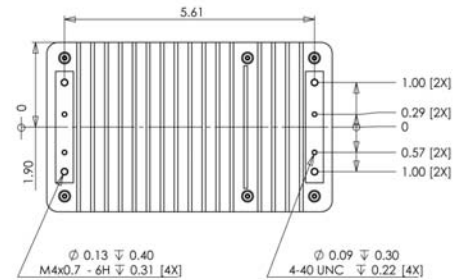
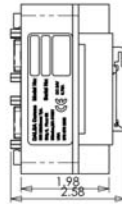
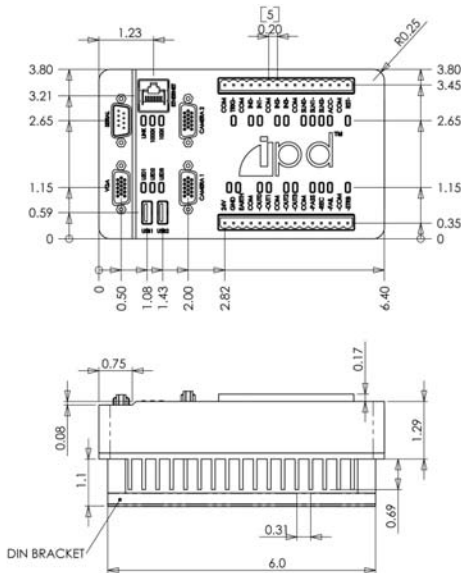
iNspec is available in various languages such as English, Chinese, French, German, Italian Japanese and Spanish.



Designed for All Users

Sherlock software offers experienced integrators flexibility and advanced capabilities to tackle the most demanding applications.

Sherlock has been deployed in thousands of applications worldwide.



Rear view without DIN Bracket

VA15, VA2X, VA3X Dimensions
All dimensions in inches

www.goipd.com

Americas

Boston, USA
Tel: +1 978-670-2002
sales@goipd.com

Europe

Munich, Germany
Tel: +49 8142-46770
sales.europe@dalsa.com

Asia Pacific

Tokyo, Japan
+81 3-5960-6353
sales.asia@dalsa.com

DALSA is an international leader in digital imaging and semiconductors and has its corporate offices in Waterloo, Ontario, Canada.

All trademarks are registered by their respective companies. DALSA reserves the right to make changes at any time without notice. © DALSA 2008. ipd_va15x_072508

