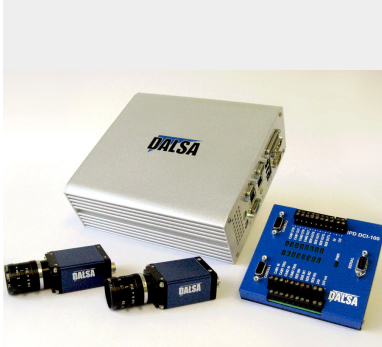


# IPD VA61

GigE Vision Appliance



## Advantages

- Cost-effective multi-camera solution
- Expandable to 4 or 8 cameras
- Ideal for color or mono applications
- Supports 2D image resolutions to 1600x1200
- Supports 1D image resolutions to 2048
- Facilitates camera cable lengths up to 100 m
- Flexible trigger and I/O options
- Pre-installed application interfaces for all levels of expertise.

## Vision Capabilities

- Positioning
- Identification
- Verification
- Measurement
- Flaw Detection

## Overview

# Versatile Vision Controller for Multi-Camera Applications

The IPD VA61 is a compact vision controller that interfaces with DALSA gigabit Ethernet cameras and 3rd party equipment to provide industrial quality control solutions. Compatible with the full range of DALSA Genie and Spyder3 cameras, the IPD VA61 offers a cost-effective and expandable performance platform for a multitude of inspection tasks.

A benefit of gigabit Ethernet cameras is that they can be positioned up to 100 meters from the controller. This allows easier installation and provides better protection of costly control components in harsh environments. Another benefit is camera expandability. The IPD VA61 camera ports can be configured to interface up to 4 or 8 cameras through Ethernet switches to provide extremely cost effective solutions.

## Specifications

Memory	1GB program / 80 GB Storage
2D Image Sizes	640x480 – 1600x1200 Area (mono/color)
1D Image Sizes	1024-2048 Line Scan (mono)
# Cameras	1 or 2 standard, expandable
Communication	Ethernet 10/100/1000, USB (2x2.0) Serial RS232, Visual (7 LEDs)
I/O	24V 8in/8out, 2 Triggers
Display	Local – standard resolutions
User Interface	iNspec, Sherlock or User-defined
Power	24V @ 2.5A
Operating	0-45°C ambient, 0-90% humidity
Dimensions	7.6x20x21.5 cm
Approvals	CE, RoHS



# IPD VA61

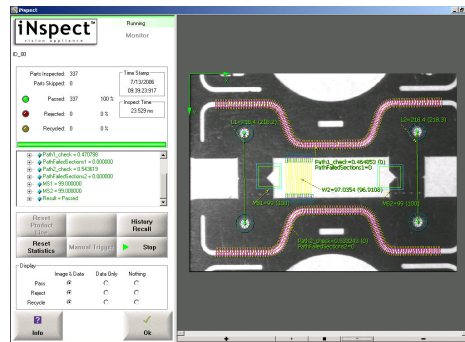
## GigE Vision Appliance

The IPD VA61 is pre-loaded with two distinct application interfaces to cater to the differing needs and experience of end users. Each offer a comprehensive suite of tools and capabilities to satisfy a variety of applications and industries.

Both software interfaces support standard factory protocols, such as Modbus and Ethernet I/P, for connecting with complementary equipment.

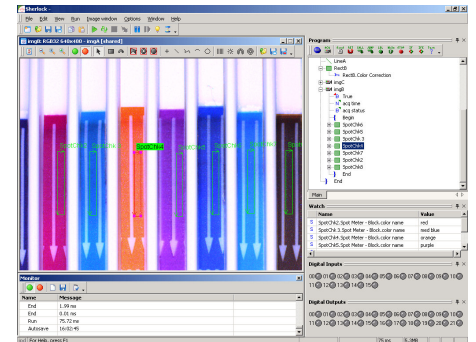
For experienced vision users or machine builders, the IPD VA61 is available with only camera drivers to support proprietary 3rd party interfaces.

## Designed for all Users



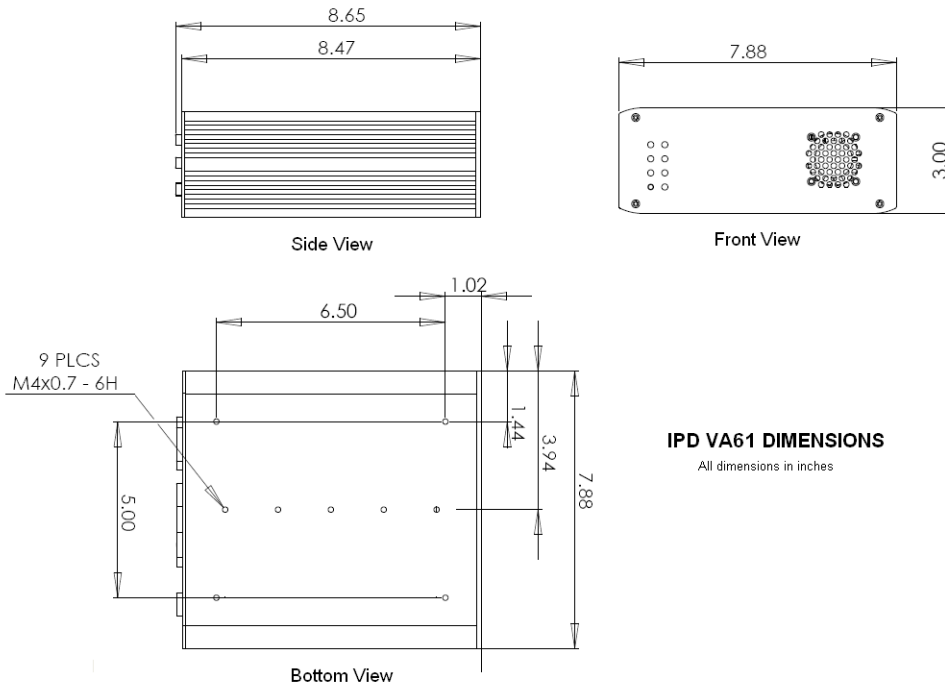
iNspec software allows users to setup and deploy vision solutions with little or no prior experience.

iNspec is available in various languages such as English, Chinese, French, Italian, Japanese and Spanish.



Sherlock software offers experienced users flexibility and advanced capabilities to tackle the most demanding applications.

Sherlock has been deployed in thousands of applications worldwide.



To learn more about the IPD VA61, see our website at [www.goipd.com/appliances](http://www.goipd.com/appliances)

DALSA IPD • 700 Technology Park Drive • Billerica, MA • 01821  
Email: [info@goipd.com](mailto:info@goipd.com) • Tel: +1 978.670.2002 • Fax: +1 978.670.2010

PART NO. VA61-M-100-B REVISION 01/08  
Copyright © 2008 DALSA. All rights reserved.