

Operation Overview

Model Number: IP-0XXX-T

V2.0

Copyright © 2006 DataVisor Marquees Inc.

—Chapter 1—

Operational Overview

The IP-xxxx-T operates as an Ethernet/IP I/O server when connected to an Ethernet/IP network. All message text is stored within the Marquee and the PLC/Controlling device is only required to select the message to be displayed on the Marquee. Variable data or values from the controller can be embedded within the message text to allow for display of values from the controller.

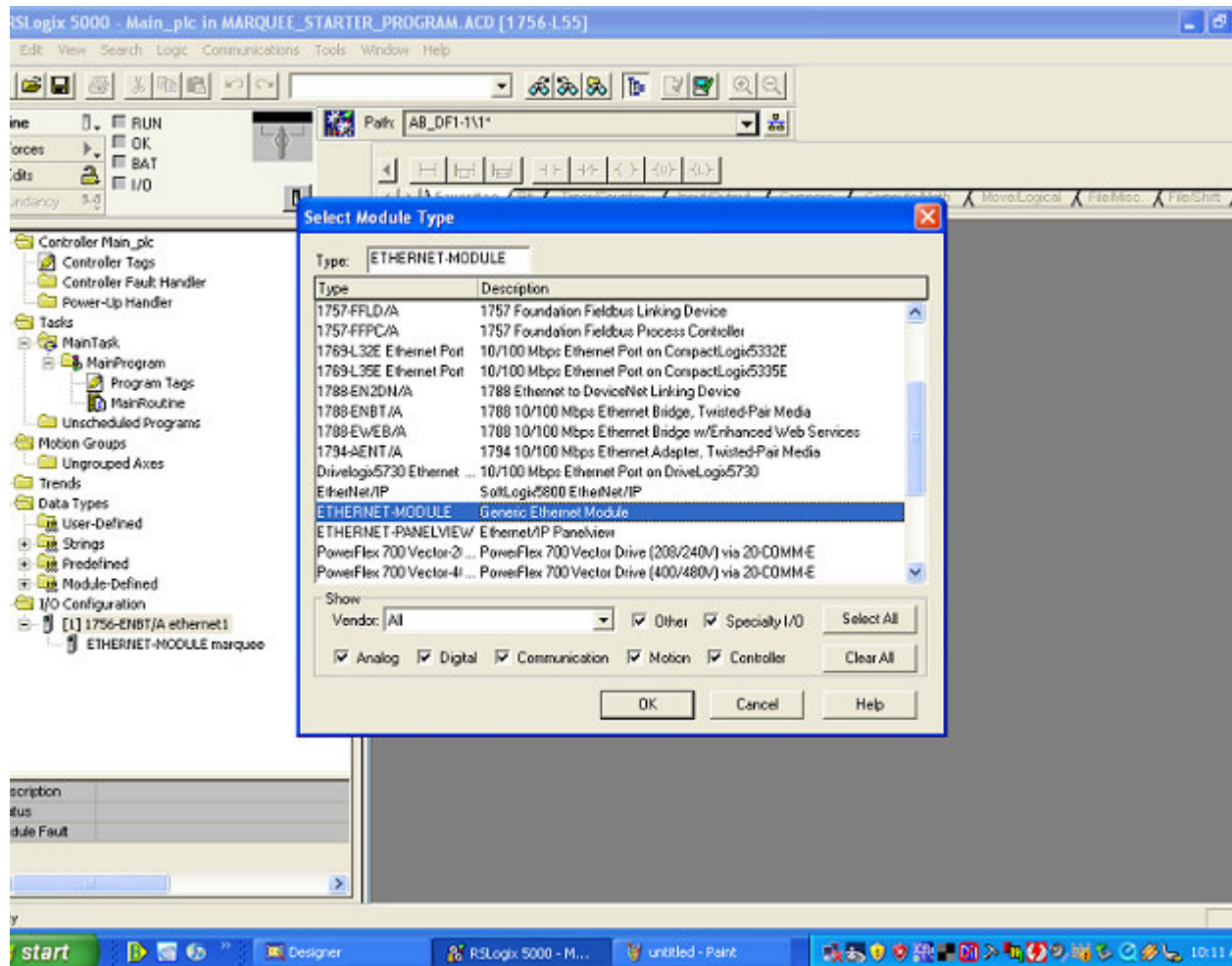
The IP marquee maps into the controller as a generic I/O module. The following screen shots demonstrate how this is accomplished.

- STEP 1

Open the controller programming software and start a new application. The user must complete the mandatory operation such as adding the controller type and hardware including the Ethernet/IP interface card.

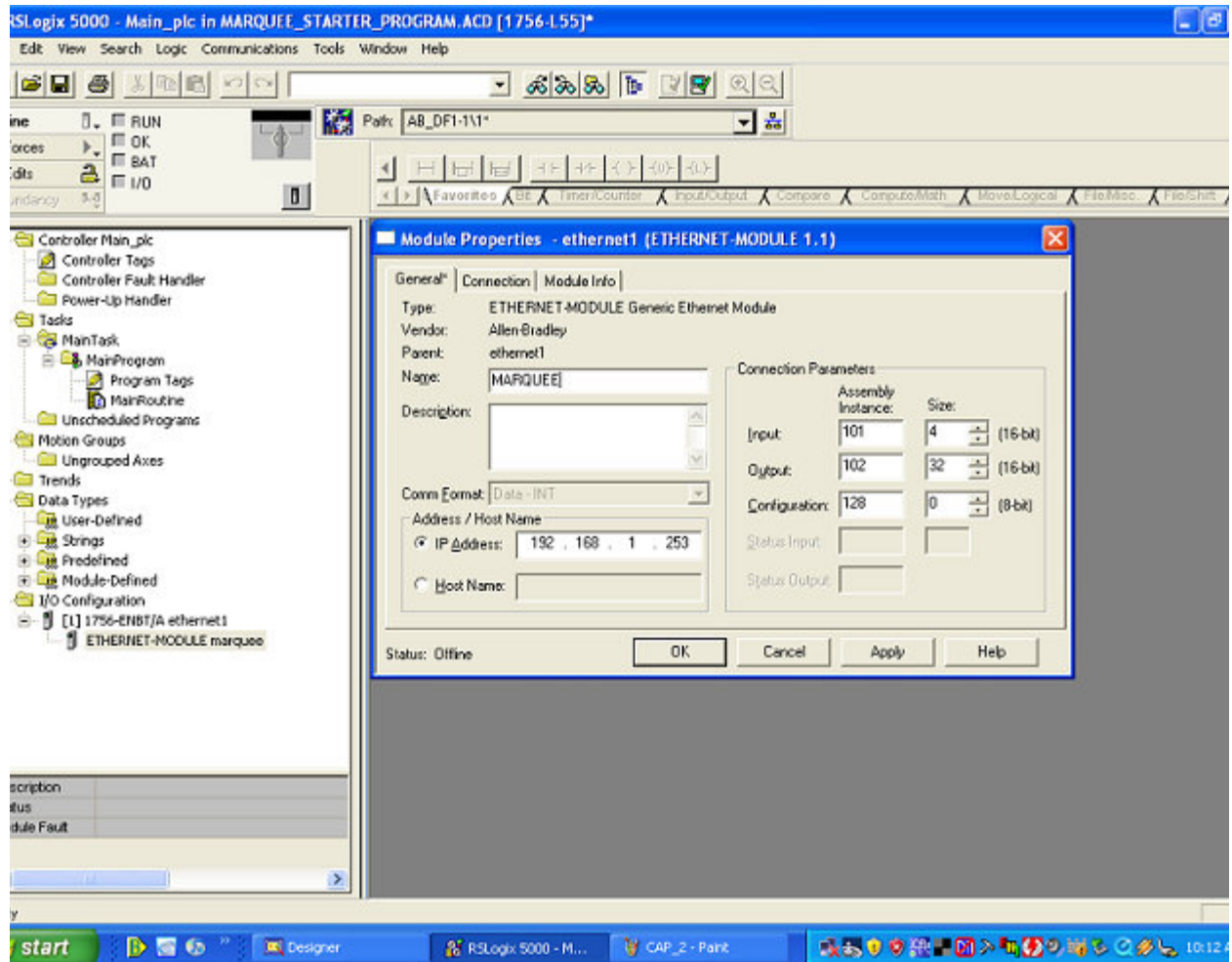
- STEP2

Under I/O configuration, select the Ethernet/IP interface and right click to ADD A NEW MODULE.



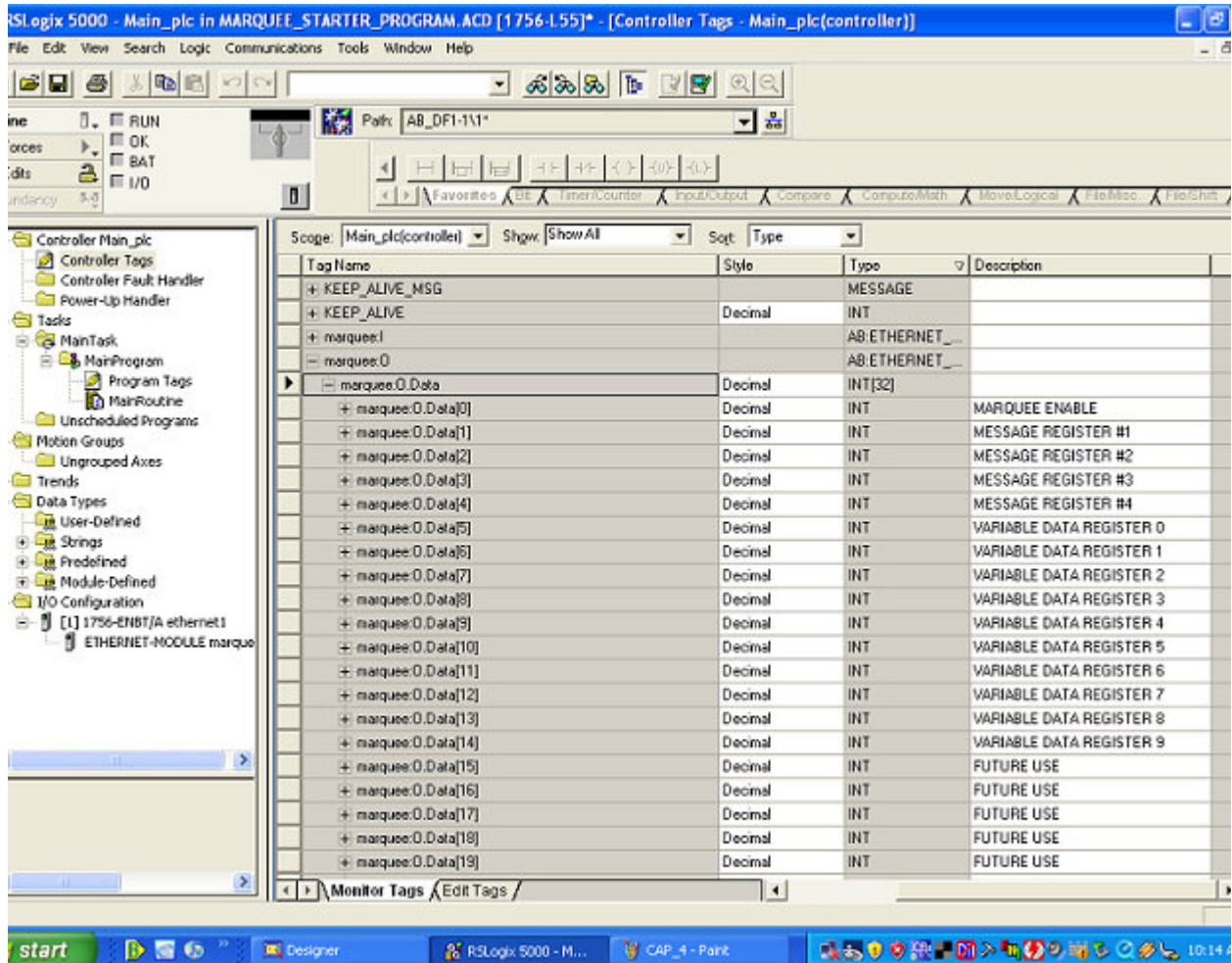
- STEP 3

Configure the Marquee parameters. Note the NAME enter will be used by the controller software as the default TAG names.



- STEP 4

Use the generated TAG names in your program.



Note: The Enable Tag (offset 0) must always have a value of 1 to allow the Marquee to operate.

Message number Tags (offset 1-4) are used to tell the Marquee what message to display. Each message that is stored within the Marquee has a corresponding Message number. Example to display the first message the user moves a value of 1 into one of the 4 message number registers. If more than one message is being requested, the Marquee will automatically cycle through these messages.

Variable Data Registers(offset 5-14) are used to display data onto the Marquee. These registers can be embedded into the text of the message by the user. What every value is placed in the register will be displayed on the Marquee will specified.

Editing Messages

The user has the ability to create up to 100 messages that are stored within the Marquee. To configure these message the user must first connect the Marquee to the PC via an Ethernet Crossover cable or connect the Marquee to the Facility network.

After this has been completed simple open your preferred WEB browser and type in the IP address of the marquee. The Monitor page is then displayed.

DATAVISOR MARQUEES - Mozilla Firefox

Edt View History Bookmarks Tools Help

http://192.168.1.200/

Customize Links Free Hotmail Windows Marketplace Windows Media Windows

MAIN DISPLAY PAGE

CURRENT DISPLAYED MESSAGE

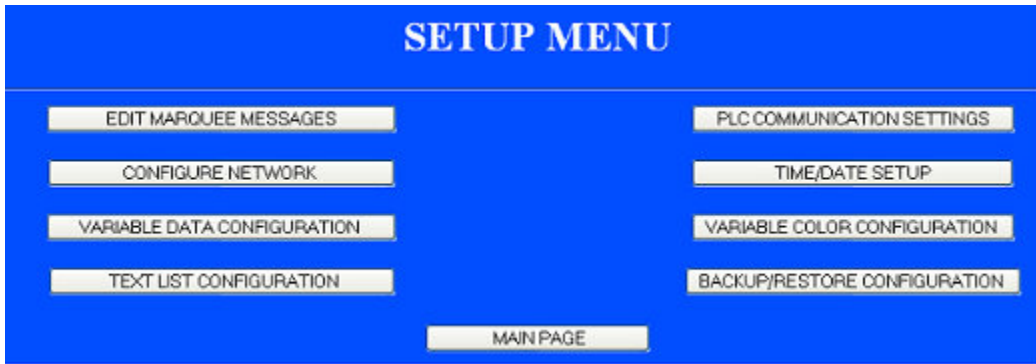
MESSAGE #2	
------------	--

MONITOR VALUES

VARIABLE DATA 0	0
CONTENINOUS COUNT	0.0
VARIABLE DATA 2	0
VARIABLE DATA 3	0
VARIABLE DATA 4	0
VARIABLE DATA 5	0
VARIABLE DATA 6	0
VARIABLE DATA 7	0
VARIABLE DATA 8	0
VARIABLE DATA 9	0

MARQUEE CONFIGURATION

By clicking on the MARQUEE CONFIGURATION button the user will access the setup page.



Clicking the EDIT MARQUEE MESSAGES allows access to the message edit window.



This is where the user creates the messages to be displayed on the Marquee.

Variable data from the controller can be configured to be displayed in a given format by going into the VARIABLE DATA CONFIGURATION page, from the SETUP menu.

VARIABLE DATA CONFIGURATION							
MAIN PAGE TITLE : MAIN DISPLAY PAGE							
MONITOR PAGE CONFIGURATION							
DATA	DATA DESCRIPTION	# DIGITS	PRECISION	FORMAT	JUSTIFY	COLOR	MONITOR DISPL
0	VARIABLE DATA 0	5	0	LEADING SPACES	RIGHT	VARIABLE	<input checked="" type="checkbox"/>
1	CONTENINOUS COUNT	4	1	LEADING SPACES	RIGHT	RED	<input checked="" type="checkbox"/>
2	VARIABLE DATA 2	5	0	LEADING SPACES	RIGHT	RED	<input checked="" type="checkbox"/>
3	VARIABLE DATA 3	5	0	LEADING SPACES	RIGHT	RED	<input checked="" type="checkbox"/>
4	VARIABLE DATA 4	5	0	LEADING SPACES	RIGHT	RED	<input checked="" type="checkbox"/>
5	VARIABLE DATA 5	5	0	LEADING SPACES	RIGHT	RED	<input checked="" type="checkbox"/>
6	VARIABLE DATA 6	5	0	LEADING SPACES	RIGHT	RED	<input checked="" type="checkbox"/>
7	VARIABLE DATA 7	5	0	LEADING SPACES	RIGHT	RED	<input checked="" type="checkbox"/>
8	VARIABLE DATA 8	5	0	LEADING SPACES	RIGHT	RED	<input checked="" type="checkbox"/>
9	VARIABLE DATA 9	5	0	LEADING SPACES	RIGHT	RED	<input checked="" type="checkbox"/>

Apply Changes

