

AGP3000 SERIES COMMUNICATION MODULES



Communication modules interface AGP3000 Series to various industrial networks. The communication module mounts directly to the backside of the AGP3000 unit via supplied mounting screws.

It is necessary to check UL certifications for hazardous locations when combining communication modules with an HMI unit.

Order Number	Description
CA5-PFSALL/EX-01	Profibus DP Slave comm module
CA6-DNSALL/EX-01	DeviceNet Comm Module
CA7-CCLALL/EX-01	CC-Link unit for the AGP3000 Series (Intelligent Device Station)
XBTZ-GUMP	Modbus Plus module
EX-LADM-MIT-Q02	Mitsubishi Q ladder monitor for AGP3000

COMMUNICATION MODULES FOR GP, GLC and PanelStation



Communication modules interface GP270, GP477R, GP2000/01, GLC2000 and PanelStation Series to various popular industrial networks. These communication modules mount directly to the backside of the GP or GLC Series unit via supplied mounting screws.

It is necessary to check UL approval ratings for hazardous locations when combining communication modules with an HMI or Graphic Logic Controller unit.

GP270, GP377, QPJ-2D100-x2P and QPK-3D200-x2P COMMUNICATION MODULES

Order Number	Description
QPJ-ABD-201	AB Data Highway Plus comm module, UL1604, CE
QPJ-ABR-201	AB 1771 Remote I/O comm module, UL1604, CE
QPJ-MBP-XA1	Modicon Modbus Plus comm module, UL1604, CE (See Note 1)
QPJ-PBS-201	Profibus DP Slave comm module
QPJ-DVN-202	DeviceNet Slave Interface module

Note:

- 1) QPJ-MBP-XA1 is a direct drop-in replacement for QPJ-MBP-201 communication modules.
- 2) For QPK-CTDE-0000 and QPK-STDN-0000 see section below

GP477R, GP577R, QPI-3x200-E2P, QPI-3x200-x2P COMMUNICATION MODULES

Order Number	Description
QPI-ABD-201	AB Data Highway Plus comm module, UL1604, CE
QPI-ABR-201	AB 1771 Remote I/O comm module, UL1604, CE
QPI-MBP-XA1	Modicon Modbus Plus comm module, UL1604, CE (See Note 1)
QPI-PBS-201	Profibus DP Slave comm module
QPI-PBS-202	Profibus DP Slave comm module with memory retention
QPI-DVN-202	DeviceNet Slave comm Module
GP070-DN41	DeviceNet Slave comm module, UL, CE
GP077-MLTE41	GP477R Multi Unit E with Ethernet, sound, Compact Flash

Note:

- 1) QPI-MBP-XA1 is a direct drop-in replacement for QPI-MBP-201 communication modules.

GP2300, GP2301, GLC2300, QPK-CTDE-0000, QPK-STDN-0000 Communication Modules



PSM-CONV00 Adapter
(See Note 2 Below)

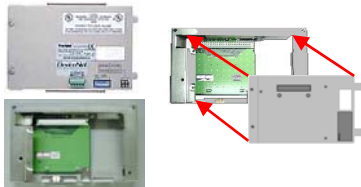
Communication modules for 6" Ethernet-based HMI units. Models Supported include: GP2300, GP2301, GLC2300 and PanelStation QPK-CTDE-0000, QPK-STDN-0000. These communication modules mount directly to the backside of the HMI unit via supplied mounting screws. The PSM-CONV00 is required when using the QPJ communication modules.

Order Number	Description
QPJ-ABD-201	AB Data Highway Plus comm module , UL1604, CE (See Note 2)
QPJ-ABR-201	AB 1771 Remote I/O comm module, UL1604, CE (See Note 2)
CA3-MBPALL-41	Modbus Plus comm. Module, UL, CE (See Note 1)
PSM-CONV00	Required adapter when using QPJ comm. Modules (See Note 2)

Notes:

- 1) The CA3-MBPALL-41 will connect directly to a QPK-CTDE-0000 or QPK-STDN-0000 without the use of the PSM-CONV00 adapter module.
- 2) The PSM-CONV00 is required for GP2300, GLC2300, GP2301, QPK-CTDE-0000 and QPK-STDN-0000 when using the QPJ-ABD-201, QPJ-ABR-201, QPJ-GEG-201, QPJ-PBS-201, and QPJ-DVN-202 modules.

GP/GLC 2400, 2500, 2600 Series, QPG/QPI/QPL-CTxE-0000 Communication Modules



PSL-CONV00

Communication modules for GP2000, GP2001, GLC2000 and Ethernet-based PanelStation Products 7.4" and larger HMI units. These communication modules mount directly to the backside of the HMI unit via supplied mounting screws. It is necessary to check UL approval ratings for hazardous locations when combining communication modules with an HMI or Graphic Logic Controller unit.

GP2400, GP2401, GLC2400, QPG-CTDE-0000	Compatible HMI units
GP2500, GP2501, GLC2500, QPI-CTxE-0000	
GP2600, GP2601, GLC2600, QPL-CTx0-0000	

Order Number	Description
QPI-ABD-201	AB Data Highway Plus comm module, UL1604, CE (See Note 1)
QPI-ABR-201	AB 1771 Remote I/O comm module, UL1604, CE (See Note 1)
QPI-PBS-201	Profibus DP Slave comm. Module (See Note 1)
QPI-PBS-202	Profibus DP Slave comm. module with memory retention (See Note 1)
QPI-DVN-202	DeviceNet Slave comm. Module (See Note 1)
CA3-MBPALL-41	Modbus Plus comm module, UL, CE (no adapter required)
PSL-CONV00	Required adapter when using QPI communication modules

- 1) The PSL-CONV00 is required when using the QPI-ABD-201, QPI-ABR-201, QPI-GEG-201, QPI-PBS-201, and QPI-DVN-202 modules.