

### DeviceNet™, Receptacles

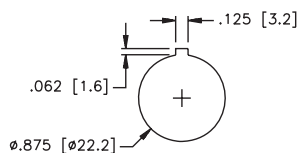
- Receptacles Provide Transition from Male to Female Connectors
- Available for Bulkhead and Feed Through Applications



Housing	Part Number	Specs	Application	Pinouts
	<b>RSF RKF 57/22</b>	Nickel Plated CuZn or Stainless Steel 300 V, 9 A -40° to +75°C IP 67	<b>minifast®</b> Bulkhead Receptacle • Straight male/female feed through	<p><b>Male</b></p> <p><b>Female</b></p>
	<b>FKM FS 57/M12</b>	Nickel Plated CuZn or Stainless Steel 250 V, 4 A -40° to +75°C IP 67	<b>eurofast®</b> Bulkhead Receptacle • Straight male/female feed through	<p><b>Male</b></p> <p><b>Female</b></p>

Standard housing material is nickel plated brass. "RSF RKF.."; "RSFV RKFV.." indicates stainless steel housing.

**Panel Cutout**  
**RSF RKF 57/22**



**Panel Cutout**  
**FKM FS 57/M12**

