

Valve Position Sensors



Type	35 mm	26 mm	20 mm	16 mm
Sensing Range	4 mm	4 mm	4 mm	2.5 mm
Pages	L9 - L14	L15 - L18	L19 - L20	L21 - L22



Type	Valve Sensor Pucks	EZ-track®
Pages	L23 - L26	L28 - L46

Type	Accessories
Pages	L27

Valve Position Sensors

Position control in actuators and drives is essential in most chemical, petrochemical, and food industry applications. **TURCK** valve position sensors provide a quality solution to valve position feedback in a variety of applications. Each industry has different needs, and while the DS20 series works well in most general applications, **TURCK** has created a variety of styles that were designed with specific industries in mind.

Chemical and Petrochemical Industries

The DSU35 provides superior protection against environmental influences, and is highly resistant to harsh chemicals, making it the ideal choice for chemical and petrochemical applications. This sensor and target puck can be mounted to several different actuator sizes without the need for adapters or spacer plates. The DSU35 is available with numerous outputs circuits such as a 2-wire DC, 2-wire NAMUR, 2-wire AC/DC, as well as with DeviceNet™ and AS-I bus protocols. We also offer the DSU35 with a terminal chamber, which is often a requirement in chemical process applications where conduit must be used.



Rising stem valve shown with
TURCK Vprox® 773 sensors.

Food & Beverage Industries

TURCK uses injection-molding technology to make the compact DSC26 sensor, ensuring that it is fully sealed and well suited in wet surroundings. These features make the DSC26 ideal for use in a number of food or beverage applications. The DSC26 has a smooth housing which makes it easy to clean, yet it also has a high degree of protection against high pressure cleaning, and is highly resistant to aggressive cleaning agents.

Overview

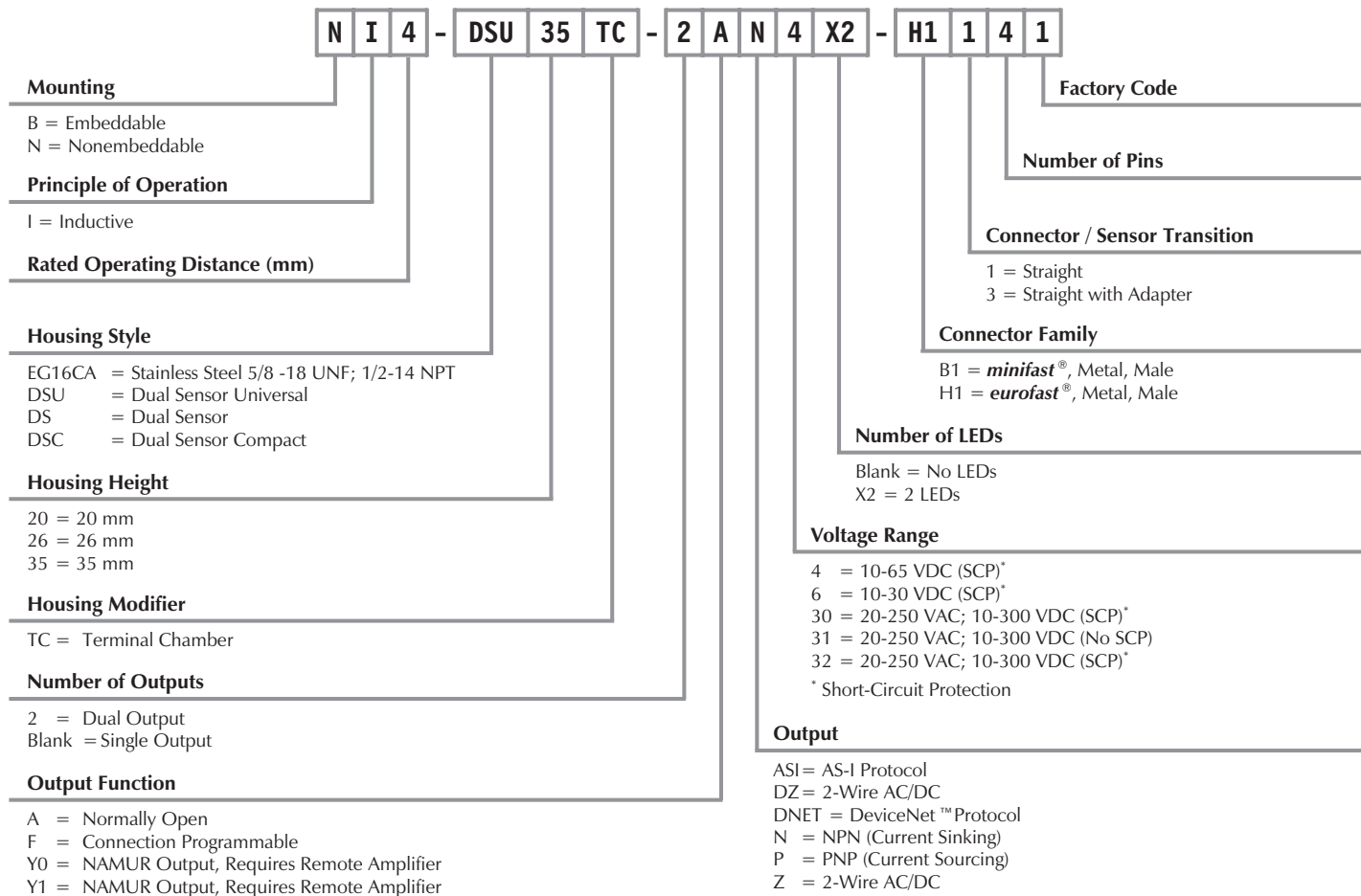
TURCK has met with market demand to create an extensive line of valve position sensors. With a variety of standard **euofast®**, **microfast®**, and **minifast®** connections available, **TURCK's** dual sensors reduce installation costs and minimize the cost of maintenance. These robust and impact resistant sensors are ideal when valve position information must be provided.

TURCK

Process Automation – Sensors

Valve Position Sensor Part Number Key

Part Number Keys are to assist in IDENTIFICATION ONLY. Consult factory for catalog items not identified.





Dual DC NAMUR – Y0, Y1

Temperature Drift	≤±10%
Differential Travel (Hysteresis)	1-10% (5% typical)
Nominal Voltage	8.2 VDC (EN60947-5-6)
Resistance Change from Nonactivated to Activated Condition	Typical <1.0 to >8.0 kΩ
Rated Insulation Voltage	≤1.5 kV
Resulting Current Change	≥2.2 mA to ≤1.0 mA
Recommended Switching Point for Remote Amplifier	>1.2 to <2.1 mA, typ. 1.55 mA ON/1.75 mA OFF
Power-On Effect	Realized in Amplifier
Reverse Polarity Protection	Yes, up to 10 VDC
Wire-Break Protection	Realized in Amplifier
Transient Protection	Realized in Amplifier
Shock.	30 g, 11 ms
Vibration	55 Hz, 1 mm Amplitude in all 3 Planes
Repeatability	≤2% of Rated Operating Distance
Short-Circuit Protection	Yes, when connected to NAMUR amplifier up to 15 VDC

Dual AC/DC without Short-Circuit Protection – ADZ31, ADZ35

Temperature Drift	≤±10%
Line Frequency	40-60 Hz
Differential Travel (Hysteresis)	3-15% (5% typical)
Voltage Drop Across Conducting Sensor	≤6.0 V at 400 mA
Off-State (Leakage) Current	≤1.7 mA
Minimum Load Current	≥5.0 mA
Inrush Current	≤8.0 A (≤10 ms, 5% Duty Cycle)
Power-On Effect	Per IEC 947-5-2
Transient Protection	Per EN 60947-5-2
Shock.	30 g, 11 ms
Vibration	55 Hz, 1 mm Amplitude in all 3 Planes
Repeatability	≤2% of Rated Operating Distance
Short-Circuit Protection	No

Dual AC/DC with Short-Circuit Protection – ADZ30, ADZ32, FDZ32

Temperature Drift	≤±10%
Line Frequency	40-60 Hz
Differential Travel (Hysteresis)	3-15% (5% typical)
Voltage Drop Across Conducting Sensor	≤6.0 V at 400 mA; 8 & 12 mm ≤6.0 V at 100 mA
Trigger Current for Overload Protection	AC: ≥440 mA; DC: ≥330 mA
Rated Insulation Voltage	≤1.5 kV
Off-State (Leakage) Current	≤1.7 mA (AC) ≤1.5 mA (DC)
Minimum Load Current	≥3.0 mA
Inrush Current	4.0 A (≤20 ms, 10% Duty Cycle)
Power-On Effect	Per IEC 947-5-2
Transient Protection	Per EN 60947-5-2
Shock	30 g, 11 ms
Vibration	55 Hz, 1 mm Amplitude in all 3 Planes
Repeatability	≤2% of Rated Operating Distance
Short-Circuit Protection	Yes

Dual DC or Discrete Output – 2AP4X2, 2AP6X2, 2AN4X2, 2AN6X2

Temperature Drift	≤±10%
Ripple	≤10%
Differential Travel (Hysteresis)	3-15% (5% typical)
Voltage Drop Across Conducting Sensor	≤1.8 V
Rated Insulation Voltage	≤0.5 kV
Trigger Current for Overload Protection	≥220 mA on 200 mA Load Current ≥170 mA on 150 mA Load Current ≥120 mA on 100 mA Load Current
Off-State (Leakage) Current	<100 µA
No-Load Current	<10 mA
Time Delay Before Availability	≤8 ms
Power-On Effect	Per IEC 947-5-2
Reverse Polarity Protection	Incorporated
Wire-Break Protection	Incorporated
Transient Protection	Per EN 60947-5-2
Shock	30 g, 11 ms
Vibration	55 Hz, 1 mm Amplitude in all 3 Planes
Repeatability	≤2% of Rated Operating Distance
Short-Circuit Protection	Yes



Dual DC – AS-interface®

Temperature Drift	≤±10%
Differential Travel (Hysteresis)	3-15% (5% typical)
No-Load Current	≤35 ma
Rated Insulation Voltage	≤0.5 kV
E/A Configuration (HEX) / ID-Code (HEX)	7 / F
I/O Matrix Input	0 = upper sensor S01 1 = lower sensor S02 2 = wire-break at output 3 = not used
I/O Matrix Output	0 = output "ON" 1-3 = not used
Short-Circuit Protection / Output Watchdog	Yes / Yes
Wire-Break Protection I _{out}	≤0.1 mA
Shock	30 g, 11 ms
Vibration	55 Hz, 1 mm Amplitude in all 3 Planes
Repeatability	≤2% of Rated Operating Distance
AS-I Version	AS-I V2.1

Dual DC – DeviceNet™

Temperature Drift	≤±10%
Differential Travel (Hysteresis)	3-15% (5% typical)
No-Load Current	≤60 ma
Rated Insulation Voltage	≤0.5 kV
Address (MacID)	0-63, via EDS file
Baud Rate	via EDS Date
Input Data DeviceNet	Bit 0 S01 input / Bit 1 S02 input / Bit 2 output error / Bit 7 input error / Bit 3-6, not used
Output Data DeviceNet	Bit 0 valve output / Bit 1-7, not used
Output Voltage	V+ - 3 V, PNP
Short-Circuit Protection / Output Watchdog	Yes / No
Wire-Break Protection I _{out}	≤0.1 mA
Shock	30 g, 11 ms
Vibration	55 Hz, 1 mm Amplitude in all 3 Planes
Repeatability	≤2% of Rated Operating Distance

LED	Color	State	Status
S01	YE	On	Target detected
S02	YE	On	Target detected
Out	YE	Off	Output Off
		On	Output On
ERR	RD	On	Output On/Off wirebreak detected
Status	RD/GN	Off	Sensor not powered
		GN On Steady	Sensor active and allocated by master
		GN Flashing	Sensor active and not allocated by master
		RD Flashing	Recoverable fault (open output, invalid input state, low bus voltage, I/O timeout)
		RD On Steady	Major fault (duplicate address, baud rate, bus off comm.)
		GN+RD On	Autobaud detect
		GN+RD Flashing	Power-up test



Housing Style	Part Number	ID Number	Features	Sensing Range (mm)	Output
35 mm - Nonembeddable, Dual Valve Sensor, Potted-In Cable 	Ni 4-DSU35-2AN4X2	M1569921	<i>Short-Circuit Protection</i>	4	Dual NPN
	Ni 4-DSU35-2AP4X2	M1569900	<i>Short-Circuit Protection</i>	4	Dual PNP
	Ni 4-DSU35-2Y1X2	M1051002	<i>Short-Circuit Protection</i>	4	Dual NAMUR
	Ni 4-DSU35-2ADZ30X2	M4290000	<i>Short-Circuit Protection</i>	4	Dual AC/DC

Additional specifications on pages L6 - L8.
 Target Pucks on pages L23 - L26.



Most Ni 4-DSU35... dual valve sensors are FM approved for installation in Class I, Division 2 hazardous locations. See **TURCK** control drawing Ni-1.002 (www.turck.com/fmcd) for specific models and installation requirements. Ni 4-DSU35-2Y0X2-... dual valve sensors are FM approved as intrinsically safe for installation in Class I, II or III, Division 1 hazardous locations per **TURCK** control drawing IS-1.000 (www.turck.com/fmcd).



Voltage	Switching Freq. (Hz)	Switching Current (mA)	Operating Temp. (°C)	Protection	Housing	Face	End Cap	Power LED	Output LED	Mating Cord, Cable Length/Jacket	Wiring Diagram #	Wiring Diagrams
10-65 VDC	50	≤200	-25 to +70	IP 67	PP	PP	N/A	N/A	YE/RD	2M/PVC	1	<p>Diagram 1</p>
10-65 VDC	50	≤200	-25 to +70	IP 67	PP	PP	N/A	N/A	YE/RD	2M/PVC	2	<p>Diagram 2</p>
5-30 VDC	50	Remote	-25 to +70	IP 67	PP	PP	N/A	N/A	YE/RD	2M/PVC	3	<p>Diagram 3</p>
20-250 VAC 10-300 VDC	30	≤400/300	-25 to +70	IP 67	PP	PP	N/A	N/A	YE/RD	2M/PVC	4	<p>Diagram 4</p>



Housing Style	Part Number	ID Number	Features	Sensing Range (mm)	Output
35 mm - Nonembeddable, Dual Valve Sensor, Terminal Chamber 	Ni 4-DSU35TC-2AP4X2	M1569902	<i>Short-Circuit Protection</i>	4	Dual PNP
	Ni 4-DSU35TC-2Y1X2	M1051004	<i>Short-Circuit Protection up to 15 VDC</i>	4	Dual NAMUR
	Ni 4-DSU35TC-2ADZ30X2	M4290002	<i>Short-Circuit Protection</i>	4	Dual AC/DC
	Ni 4-DSU35TC-2ASIX4	M1902005	<i>Short-Circuit Protection</i>	4	Dual ASI-BUS

Additional specifications on pages L6 - L8.
 Target Pucks on pages L23 - L26.



Most Ni 4-DSU35... dual valve sensors are FM approved for installation in Class I, Division 2 hazardous locations. See **TURCK** control drawing Ni-1.002 (www.turck.com/fmcd) for specific models and installation requirements. Ni 4-DSU35TC-2Y0X2 dual valve sensors are FM approved as intrinsically safe for installation in Class I, II or III, Division 1 hazardous locations per **TURCK** control drawing IS-1.000 (www.turck.com/fmcd).



Voltage	Switching Freq. (Hz)	Switching Current (mA) VAC/VDC	Operating Temp. (°C)	Protection	Housing	Face	End Cap	Power LED	Output LED	Mating Cord. Cable Length/Jacket	Wiring Diagram #	Wiring Diagrams
10-65 VDC	50	≤200	-25 to +70	IP 67	PP	PP	N/A	N/A	YE/RD	N/A	1	<p>Diagram 1</p>
5-30 VDC	50	Remote	-25 to +70	IP 67	PP	PP	N/A	N/A	YE/RD	N/A	2	<p>Diagram 2</p>
20-250 VAC 10-300 VDC	30	≤400/300	-25 to +70	IP 67	PP	PP	N/A	N/A	YE/RD	N/A	3	<p>Diagram 3</p>
18-33 VDC	30	≤80	-25 to +70	IP 67	PP	PP	N/A	N/A	YE/RD	N/A	4	<p>Diagram 4</p>



Housing Style	Part Number	ID Number	Features	Sensing Range (mm)	Output
35 mm - Nonembeddable, Dual Valve Sensor, eurofast® Connector 	Ni 4-DSU35-2AN4X2-H1141	M1569920	Short-Circuit Protection	4	Dual NPN
	Ni 4-DSU35-2AP4X2-H1141	M1569901	Short-Circuit Protection	4	Dual PNP
	Ni 4-DSU35-2Y0X2-H1140	M1051003	Short-Circuit Protection up to 15 VDC	4	Dual NAMUR
35 mm - Nonembeddable, Dual Valve Sensor, minifast® Connector 	Ni 4-DSU35-2ADZ30X2-B1151	M4290001	Short-Circuit Protection	4	Dual AC/DC
	Ni 4-DSU35-2ADZ35X2-B1151	M4290009		4	
35 mm - Nonembeddable, Dual Valve Sensor, eurofast Connector 	Ni 4-DSU35-2ASIX4-H1140	M1902000	Short-Circuit Protection	4	Dual ASI-BUS
	Ni 4-DSU35-2DNETX5-H1150	M1569908	Short-Circuit Protection	4	Dual DeviceNet™
35 mm - Nonembeddable, Dual Valve Sensor, minifast Connector 	Ni 4-DSU35-2AP4X2-B1160-FKE4.5	M1569923	Short-Circuit Protection	4	Dual PNP

Additional specifications on pages L6 - L8.
 Target Pucks on pages L23 - L26.



Most Ni 4-DSU35... dual valve sensors are FM approved for installation in Class I, Division 2 hazardous locations. See **TURCK** control drawing Ni-1.002 (www.turck.com/fmcd) for specific models and installation requirements. Ni 4-DSU35-2Y0X2-... dual valve sensors are FM approved as intrinsically safe for installation in Class I, II or III, Division 1 hazardous locations per **TURCK** control drawing IS-1.000 (www.turck.com/fmcd).

Voltage	Switching Freq. (Hz)	Switching Current (mA) VAC/VDC	Operating Temp. (°C)	Protection	Housing	Face	End Cap	Power LED	Output LED	Mating Cord, Cable Length/Jacket	Wiring Diagram #	Wiring Diagrams
10-65 VDC	50	≤200	-25 to +70	IP 67	PP	PP	N/A	N/A	YE/RD	RK 4.4T-*	1	Diagram 1
10-65 VDC	50	≤200	-25 to +70	IP 67	PP	PP	N/A	N/A	YE/RD	RK 4.4T-*	2	Diagram 2
5-30 VDC	50	Remote	-25 to +70	IP 67	PP	PP	N/A	N/A	YE/RD	RK 4.41T-*	6	Diagram 3
20-250 VAC 10-300 VDC	30	≤400/300	-25 to +70	IP 67	PP	PP	N/A	N/A	YE/RD	RKM 50-*M	4	Diagram 4
20-150 VAC 10-150 VDC	50	≤400/300	-25 to +70	IP 67	PP	PP	N/A	N/A	YE/RD	RKM 50-*M	4	Diagram 5
18-33 VDC	30	≤80	-25 to +70	IP 67	PP	PP	N/A	N/A	YE/RD	RKC 254-*M RS 4.4T-*	5	Diagram 6
11-25 VDC	50	≤80	-25 to +70	IP 67	PP	PP	N/A	N/A	YE/RD	RKC 572-*M RS 4.4T-*	6	Diagram 7
10-65 VDC	50	≤200	-25 to +70	IP 67	PP	PP	N/A	N/A	YE/RD	RKM 60-*M RK 4.5T-*	7	Diagram 8

* Length in meters.



Voltage	Switching Freq. (Hz)	Switching Current (mA) VAC/VDC	Operating Temp. (°C)	Protection	Housing	Face	End Cap	Power LED	Output LED	Mating Cord, Cable Length/Jacket	Wiring Diagram #	Wiring Diagrams
10-30 VDC	50	≤200	-25 to +70	IP 67	PP	PP	N/A	N/A	YE/RD	RK 4.4T-*	1	<p>Diagram 1</p> <p>Diagram 2</p> <p>Diagram 3</p>
10-65 VDC	50	≤200	-25 to +70	IP 67	PP	PP	N/A	N/A	YE/RD	RK 4.4T-*	1	
5-30 VDC	50	Remote	-25 to +70	IP 67	PP	PP	N/A	N/A	YE/RD	RK 4.41T-*	2	
18-33 VDC	30	≤80	-25 to +70	IP 67	PP	PP	N/A	N/A	YE/RD	RKC 254-* RS 4.4T-*	3	

* Length in meters.



Housing Style	Part Number	ID Number	Features	Sensing Range (mm)	Output
26 mm - Nonembeddable, Dual Valve Sensor, Potted-In Cable 	Ni 4-DSU26-2ADZ30X2	M4290005	Short-Circuit Protection	4	Dual AC/DC
26 mm - Nonembeddable, Dual Valve Sensor, Terminal Chamber 	Ni 4-DSU26TC-2ADZ30X2	M4290004	Short-Circuit Protection	4	Dual AC/DC

Additional specifications on pages L6 - L8.
 Target Pucks on pages L23 - L26.



Most Ni 4-DS20-2Y1X2-... dual valve sensors are FM approved as intrinsically safe for installation in Class I, Division 1 hazardous locations per **TURCK** control drawing IS-1.000 (www.turck.com/fmcd).



Voltage	Switching Freq. (Hz)	Switching Current (mA) VAC/VDC	Operating Temp. (°C)	Protection	Housing	Face	End Cap	Power LED	Output LED	Mating Cord, Cable Length/Jacket	Wiring Diagram #	Wiring Diagrams
20-250 VAC 10-300 VDC	30	≤400/300	-25 to +70	IP 67	PP	PP	N/A	N/A	YE/RD	2M/PVC	1	<p>Diagram 1</p> <p>Diagram 2</p>
	30	≤400/300	-25 to +70	IP 67	PP	PP	N/A	N/A	YE/RD	N/A	2	



Housing Style	Part Number	ID Number	Features	Sensing Range (mm)	Output
20 mm - Nonembeddable Dual Valve Sensor eurofast® Connection 	Ni 4-DS20-2AP6X2-H1141	M1650020	Short-Circuit Protection	4	Dual PNP
	Ni 4-DS20-2Y1X2-H1140	M1050001	Short-Circuit Protection up to 15 VDC	4	Dual NAMUR
20 mm - Nonembeddable Dual Valve Sensor microfast® Connection 	Ni 4-DS20-2AZ31X2-B3151	M1305000		4	Dual AC/DC
20 mm - Nonembeddable Dual Valve Sensor Potted-In Cable 	Ni 4-DS20-2AP6X2	M1650022	Short-Circuit Protection	4	Dual PNP
	Ni 4-DS20-2Y1X2	M1050002	Short-Circuit Protection up to 15 VDC	4	Dual NAMUR

Additional specifications on pages L6 - L8.
 Target Pucks on pages L23 - L26.



Most Ni 4-DS20-2Y1X2-... dual valve sensors are FM approved as intrinsically safe for installation in Class I, Division 1 hazardous locations per **TURCK** control drawing IS-1.000 (www.turck.com/fmcd).

Voltage	Switching Freq. (Hz)	Switching Current (mA) VAC/VDC	Operating Temp. (°C)	Protection	Housing	Face	End Cap	Power LED	Output LED	Mating Cord, Cable Length/Jacket	Wiring Diagram #	Wiring Diagrams
10-30 VDC	50	≤200	-25 to +70	IP 67	PBT	PBT	N/A	N/A	YE/YE	RK 4.4T-*	1	<p>Diagram 1</p>
5-30 VDC	50	Remote	-25 to +70	IP 67	PBT	PBT	N/A	N/A	RD/RD	RK 4.41T-*	2	<p>Diagram 2</p>
20-250 VAC 10-300 VDC	20	≤100/300	-25 to +70	IP 67	PBT	PBT	N/A	N/A	RD/RD	KB 5T-*	3	<p>Diagram 3</p>
10-30 VDC	50	≤200	-25 to +70	IP 67	PBT	PBT	N/A	N/A	YE/YE	2M/PVC	4	<p>Diagram 4</p>
5-30 VDC	50	Remote	-25 to +70	IP 67	PBT	PBT	N/A	N/A	RD/RD	2M/PVC	5	<p>Diagram 5</p>

* Length in meters.



Housing Style	Part Number	ID Number	Features	Sensing Range (mm)	Output
<p>16 mm - Embeddable, Vprox 773™, Potted-In Cable</p>	Bi 2.5-EG16CA-FDZ32X2	T4205100-1	<p><i>Prog. Outputs</i> <i>Low Temp. -40°C</i> <i>Short-Circuit Protection</i></p>	2.5	2-Wire AC/DC
<p>16 mm - Embeddable, Vprox 773, minifast® Connector</p>	Bi 2.5-EG16CA-FDZ32X2-B1151	T4205190	<p><i>Prog. Outputs</i> <i>Low Temp. -40°C</i> <i>Short-Circuit Protection</i></p>	2.5	2-Wire AC/DC

Additional specifications on pages L6 - L8.



TURCK Vprox sensors are FM approved for installation in Class I, Division 2 hazardous locations when installed per TURCK control drawing Ni-1.002 (www.turck.com/fmcd).



Voltage	Switching Freq. (Hz)	Switching Current (mA) VAC/VDC	Operating Temp. (°C)	Protection	Housing	Face	End Cap	Power LED	Output LED	Mating Cord, Cable Length/Jacket	Wiring Diagram #	Wiring Diagrams
20-250 VAC 10-300 VDC	50	≤100	-40 to +70	IP 67	SS	PA 12	N/A	GN	RD	2M/PVC	1	<p>Diagram 1</p>
	50	≤100	-40 to +70	IP 67	SS	PA 12	N/A	GN	RD	RK 50-*M	2	<p>Diagram 2</p>

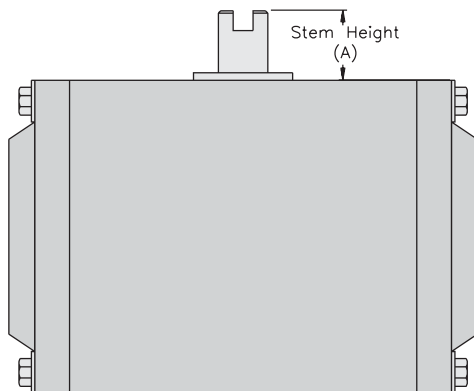
* Length in meters.

Valve Sensor Puck Selection Guide

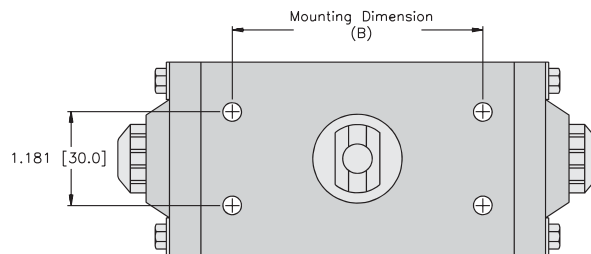
Stem Height (A)		20 mm		30 mm		50 mm	
Mounting Dimension (B)		80 mm	130 mm	80 mm	130 mm	80 mm	130 mm
Part Number	Output Function						
DS20	End Position Indication- On	BTS-DS20-TP1 (M6900155)	Consult Factory	BTS-DS20-TK1 (M6900156)	BTS-DS20-TP1 (M6900155)	N/A	N/A
	Adjustable/End Position- On	BTS-DS20-KEY (M6900136)	BTS-DS20-KEY (M6900136)	Consult Factory	Consult Factory	N/A	N/A
DSC26	End Position Indication- On	BTS-DSC26-EB1 (M6900222)	Consult Factory	BTS-DSC26-EB2 (M6900223)	BTS-DSC26-EB3 (M6900224)	Consult Factory	Consult Factory
DSU35	End Position Indication- On	BTS-DSU35-EB1 (M6900225)	BTS-DSU35-EB1 (M6900225)	BTS-DSU35-EB1 (M6900225)	BTS-DSU35-EB1 (M6900225)	BTS-DSU35-EB1 (M6900225) and BTS-DSU35-Z07 (M6900403)	BTS-DSU35-EB1 (M6900225) and BTS-DSU35-Z07 (M6900403)
	Adjustable/End Position- On	BTS-DSU35-EBE1 (M6900226)	BTS-DSU35-EBE1 (M6900226)	BTS-DSU35-EBE2 (M6900228)	BTS-DSU35-EBE2 (M6900228)	BTS-DSU35-EBE1 (M6900226) and BTS-DSU35-Z07 (M6900403)	BTS-DSU35-EBE1 (M6900226) and BTS-DSU35-Z07 (M6900403)
	End Position Indication- Off	BTS-DSU35-EU1 (M6900227)	BTS-DSU35-EU1 (M6900227)	BTS-DSU35-EU1 (M6900227)	BTS-DSU35-EU1 (M6900227)	BTS-DSU35-EU1 (M6900227) and BTS-DSU35-Z07 (M6900403)	BTS-DSU35-EU1 (M6900227) and BTS-DSU35-Z07 (M6900403)

For stems that exceed 40 mm in diameter, consult drawings for appropriate shim package.

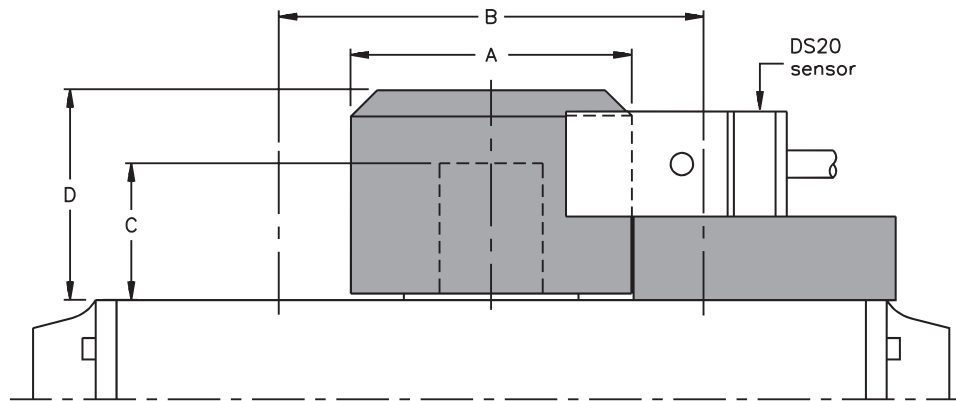
Actuator Side View



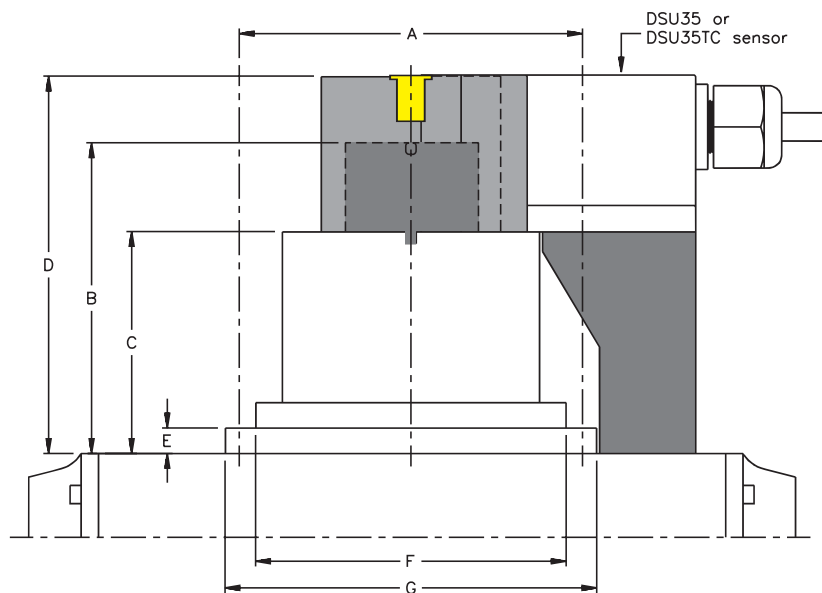
Actuator Top View



Valve Sensor Puck Information

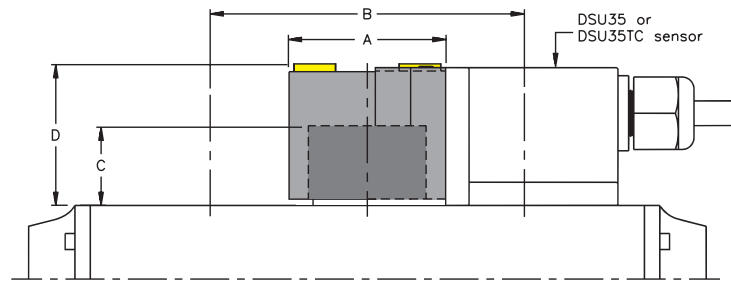


Part Number	Dimensions (mm)			
	A	B	C	D
BTS-DS20-KEY	40	80x130	20	37

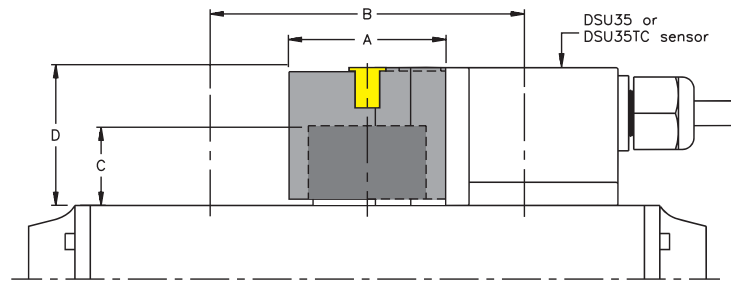


Part Number	Dimensions (mm)						
	A	B	C	D	E	F	G
BTS-DSU35-Z03	130	50	30	65	19 (max)	70	110
BTS-DSU35-Z07	130	70	50	85	19 (max)	10	110

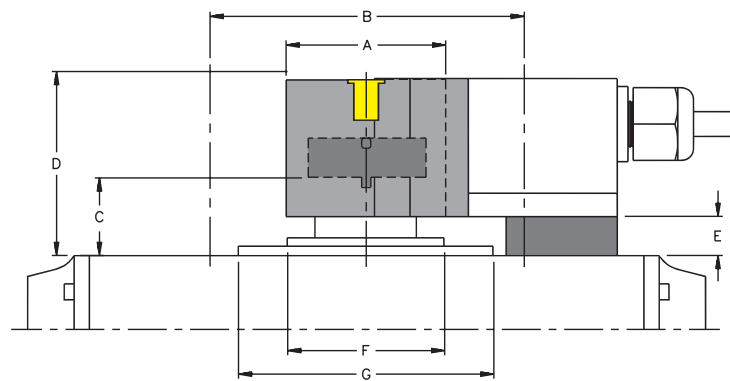
Valve Sensor Puck Information



Part Number	Dimensions (mm)			
	A	B	C	D
BTS-DSU35-EU1	40	80x130	20x30	36



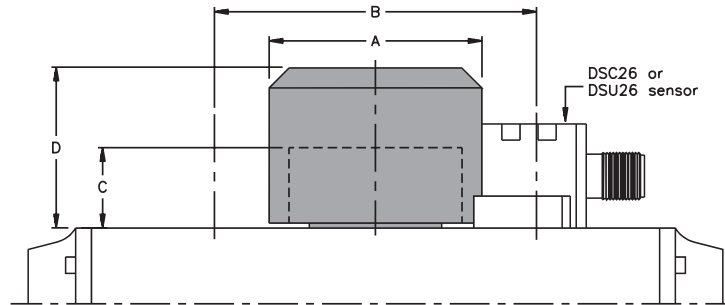
Part Number	Dimensions (mm)			
	A	B	C	D
BTS-DSU35-EB1	40	80x130	20x30	36
BTS-DSU35-EBE1	40	80x130	20	36
BTS-DS20-TP1	40	80	20	36



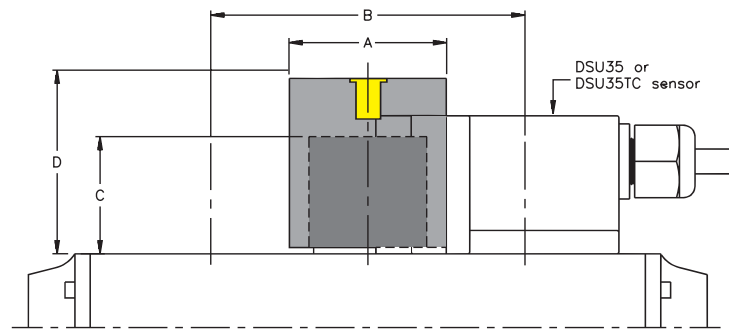
Part Number	Dimensions (mm)						
	A	B	C	D	E	F	G
BTS-DSU35-Z01	40	80x130	20	45	10	40	65
BTS-DSU35-Z02	40	80x130	20	55	20	40	65
BTS-DSU35-Z04	40	80x130	30	45	10	40	65
BTS-DSU35-Z05	40	80x130	30	55	20	30	65
BTS-DSU35-Z06	40	80x130	30	65	30	40	65
BTS-DS20-TK1	40	80x130	30	46	10	50	50

"Z" mounting packages include shims to increase height of sensor and may include similar shim for target puck (depending on package).

Valve Sensor Puck Information



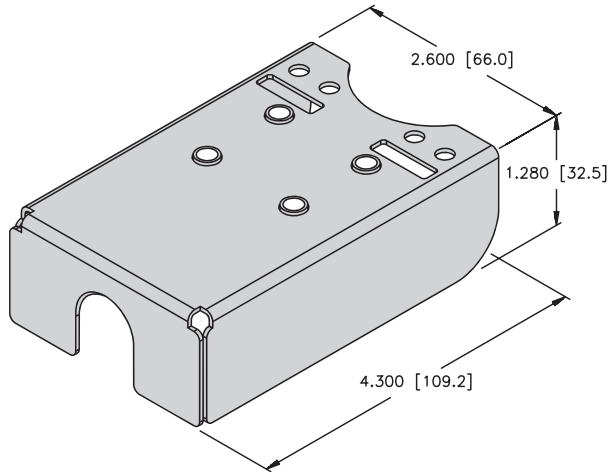
Part Number	Dimensions (mm)			
	A	B	C	D
BTS-DSC26-EB1	53	80	20	40
BTS-DSC26-EB2	65	80	30	50
BTS-DSC26-EB3	102	130	30	50



Part Number	Dimensions (mm)			
	A	B	C	D
BTS-DSU35-EBE2	40	80x130	30	47

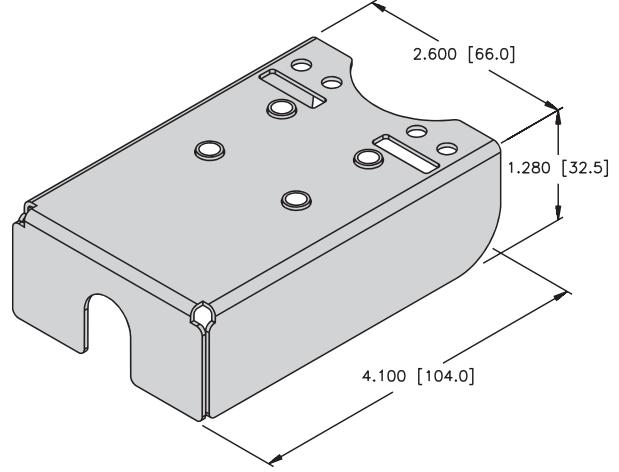
Valve Sensor Accessories for Class I, Division 2 Applications

GUARD-DSU35-AD
 (A9235)



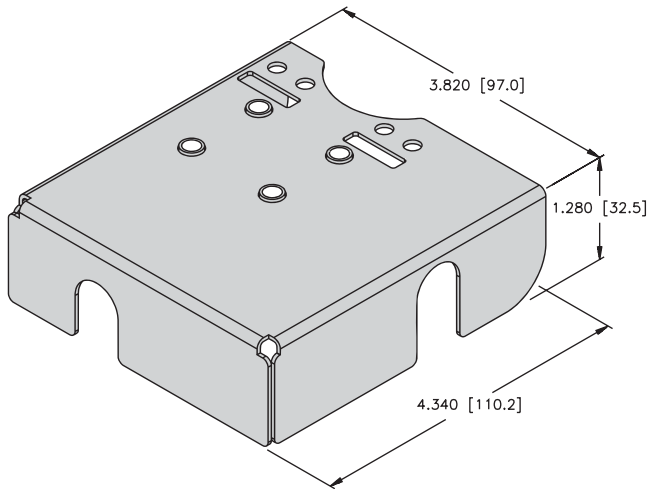
For use with: Ni 4-DSU35-ADZ35X2-B1151

GUARD-DSU35-DC
 (A9234)



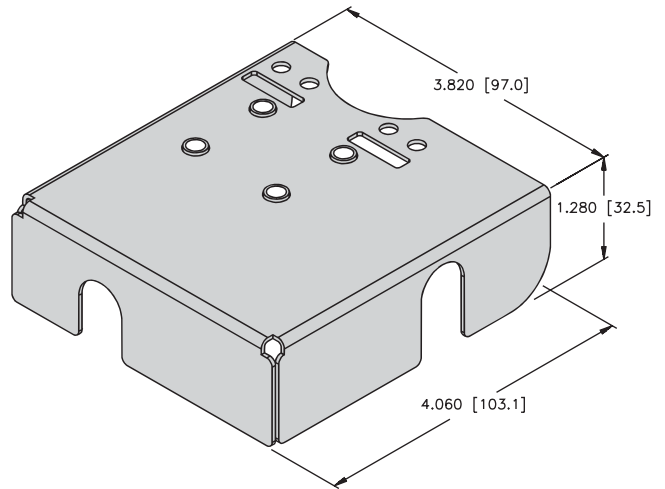
For use with: Ni 4-DSU35-2AP4X2-H1140
 Ni 4-DSU35-2AN4X2
 Ni 4-DSU35-2ADZ35X2
 Ni 4-DSU35-2AP4X2

GUARD-DSU35-DCS
 (A9287)



For use with: Ni 4-DSU35-2AP4X2-B1160-FKE4.5

GUARD-DSU35-DCS
 (A9150)



For use with: Ni 4-DSU35-2ASIX4
 Ni 4-DSU35-2DNETX5