

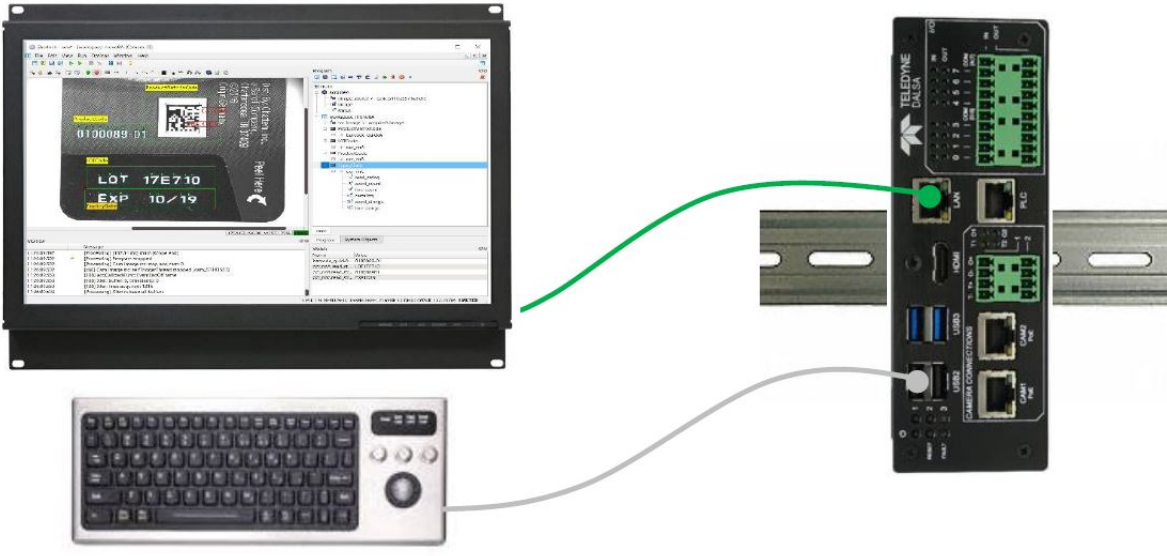


VICORE Programming Connections

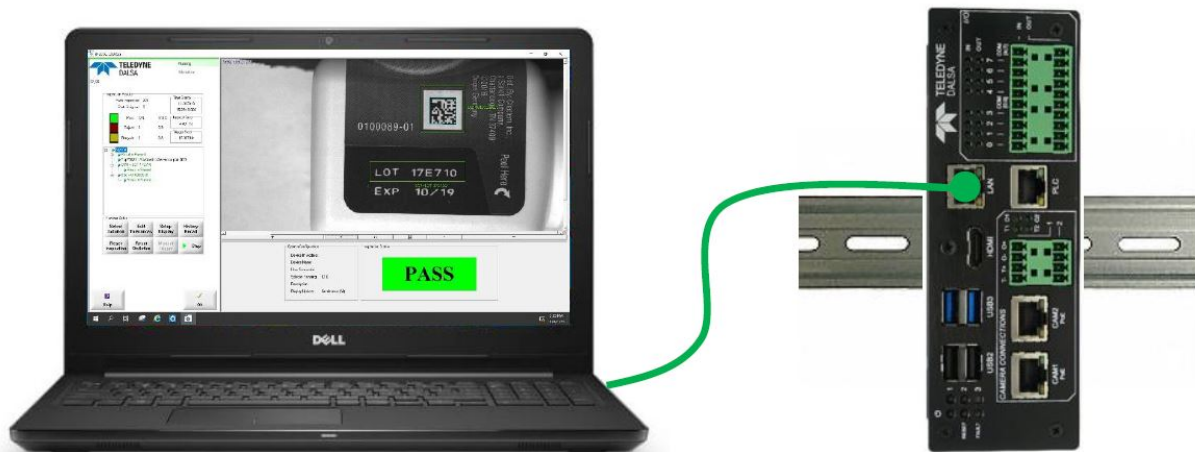
Rev. 1; April 22, 2020

Two Methods for Programming a Teledyne Dalsa VICORE (Vision Core Element)

1. Standalone Access



2. Remote Access



Standalone Access

This is the simplest method for programming the VICORE which is running Windows 10 IoT Core.

1. Attach an HDMI monitor
2. Attach a USB keyboard
3. Attach a USB mouse

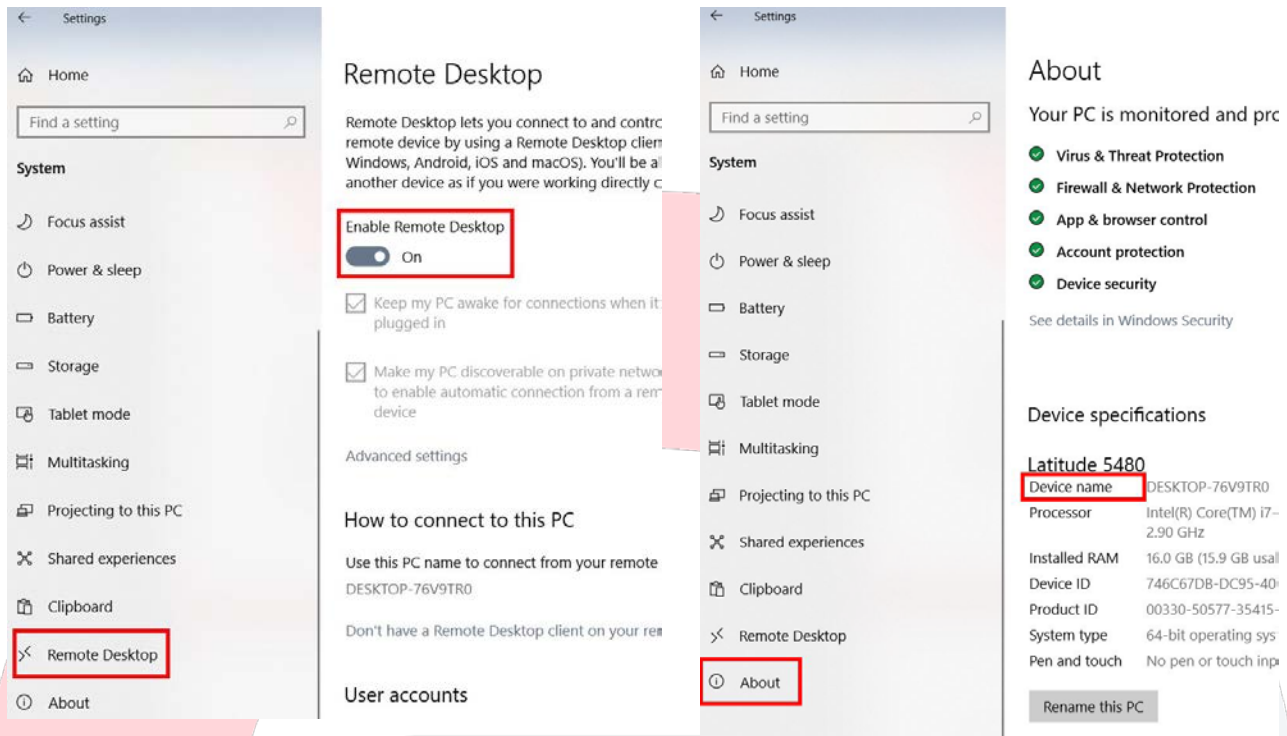
Power the VICORE with 24 VDC @ 2A and use as you would any desktop PC.

The software is preloaded and ready to access.

Remote Access

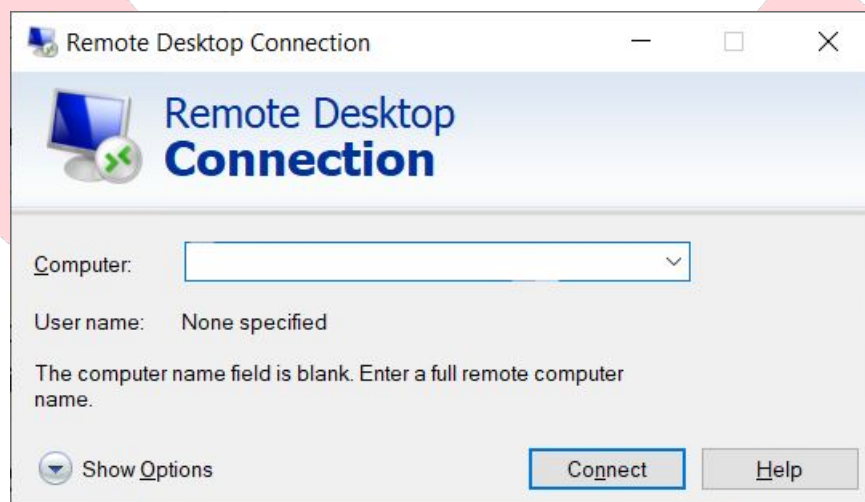
This method can replace the Standalone Access when it is not practical to keep a monitor, keyboard and mouse at the VICORE location. This method is useful when programming with a notebook or when accessing the VICORE over a network.

1. Connect the host PC Ethernet port to the VICORE LAN port. The VICORE LAN port has a default static IP address of 192.168.0.100. Configure the host PC Ethernet port with a static IP address of 192.168.0.XXX.
2. There are two parameters that need to be checked on the VICORE before proceeding. The “Enable Remote Desktop” is enabled (the VICORE ships with this enabled) and the Device name. Use the following procedures.
3. Start > Settings > System > Remote Desktop > Enable Remote Desktop “ON”
4. Start > Settings > System > About. Make note of the Device name.



5. On the host PC type “remote” in the search box on the taskbar and then select “Remote Desktop Connection.”

6. Type the VICORE Device name in the Computer field and select Connect.



The default User Name and Password is **teledyne**. You should now see the desktop of the VICORE.

